

Reef Rescue was initiated by the Australian Government in 2008 to halt the decline of water quality impacting the Great Barrier Reef. The program provided incentive grants to farmers to help facilitate changes in farming practices to reduce the loss of soil, nutrients and pesticides from their paddocks.

The success of the program led to its continuation from 2013 to 2016 as the Reef Programme.

Terrain NRM worked in partnership with industry to deliver both programs in the Wet Tropics. The primary focus of the programs was in cane, bananas, grazing, dairy, multi-crop and pawpaw.

### Continued Momentum

As part of the Wet Tropics Sugar Industry Partnership (WTSIP), Terrain is continuing to work with industry partners to deliver reef investment in the Wet Tropics. This includes providing farmers with one-on-one advice and training through the Reef Trust III program.



### Acknowledgements

Thanks to the 1209 farming businesses that participated in the Australian Government funded Reef Rescue and Reef Programme initiatives. We would also like to acknowledge the following organisations who helped deliver these programs to improve water quality in the Wet Tropics.

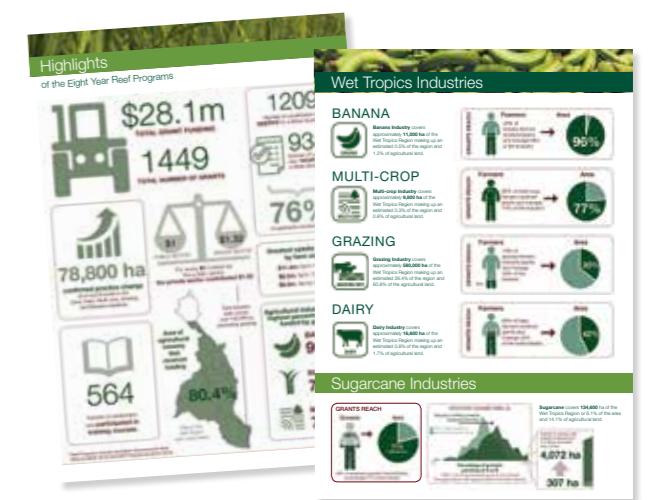


63 Anderson Street, Cairns  
 ☎ 07 4043 8000  
 www.terrain.org.au



# Reef Achievements by Wet Tropics Farmers 2008-2016

During 2008-2016, 20 organisations worked across the agricultural industry in the Wet Tropics to deliver the Australian Government's Reef Rescue and Reef Programme initiatives to improve water quality flowing to the Great Barrier Reef.



# Highlights

of the Eight Year Reef Programs



**\$28.1m**  
TOTAL GRANT FUNDING

**1449**  
TOTAL NUMBER OF GRANTS

**1209**  
Number of Landholders who **applied** for a Water Quality Grant

**938**  
Number of Landholders who **received** a Water Quality Grant

**76%**  
of applicants received grants

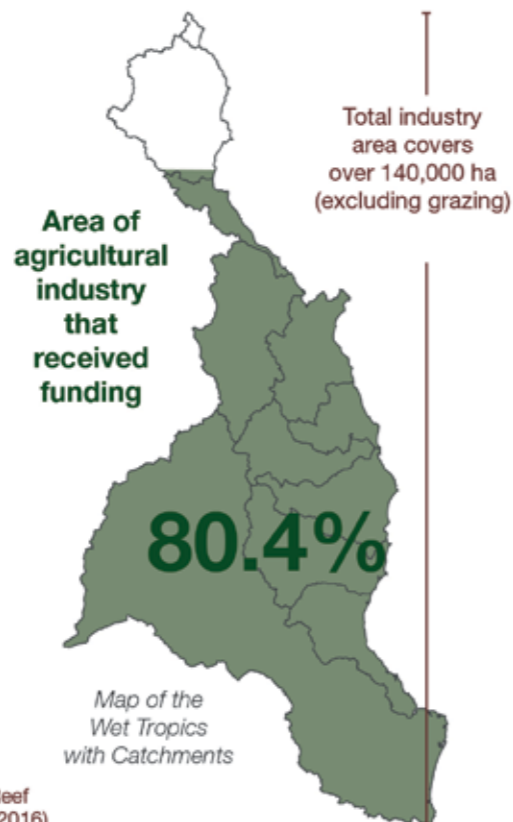
**78,800 ha**  
confirmed practice change  
(to A and B levels) in the Cane, Dairy, Multi-crop, Grazing and Banana industries.



**Greatest uptake of grants by farm size =**

- \$11.4m:** farm <150ha
- \$8.2m:** farm 150-400ha
- \$8.5m:** farms 400ha

**564**  
Number of Landholders who **participated in training courses.**



**\$37.1m**

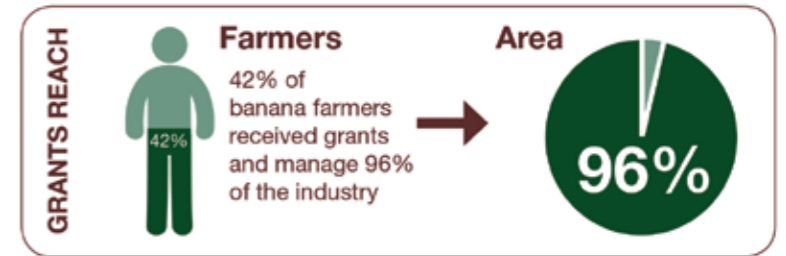
Wet Tropics farmers invested **\$37.1m** to **improve water quality**

# Wet Tropics Industries

## BANANA



**Banana Industry** covers approximately **11,000 ha** of the Wet Tropics Region making up an estimated 0.5% of the region and 1.2% of agricultural land.



## MULTI-CROP



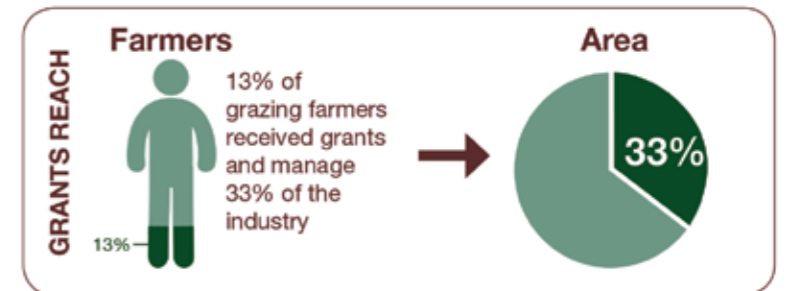
**Multi-crop Industry** covers approximately **9,800 ha** of the Wet Tropics Region making up an estimated 0.3% of the region and 0.8% of agricultural land.



## GRAZING



**Grazing Industry** covers approximately **580,000 ha** of the Wet Tropics Region making up an estimated 26.4% of the region and 60.8% of the agricultural land.



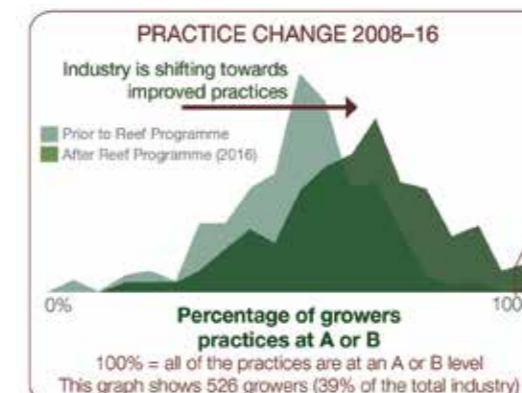
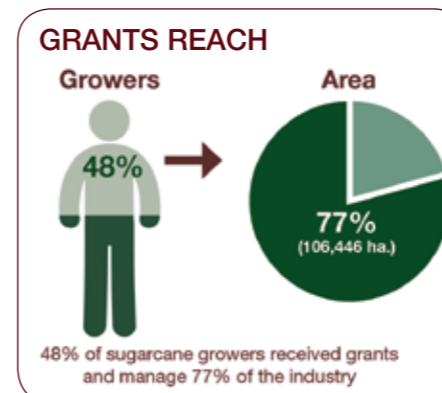
## DAIRY



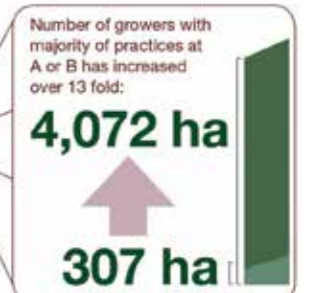
**Dairy Industry** covers approximately **16,600 ha** of the Wet Tropics Region making up an estimated 0.8% of the region and 1.7% of agricultural land.



# Sugarcane Industry



**Sugarcane** covers **134,600 ha** of the Wet Tropics Region or 6.1% of the area and 14.1% of agricultural land.



\*Reef Programs include Australian Government's Reef Rescue (2008-2013) and Reef Programme (2013-2016)