

General information on the Rainforest Decision Support Tool

The Rainforest Decision Support Tool is an online mapping tool for use in conjunction with the [Building Rainforest Resilience](#) project, particularly the “Priority areas for revegetation, weed management and/or habitat protection for Cassowary, Mabi forest and Littoral rainforest” document. The “Priority areas” document is updated annually. For a copy of the latest “Priority areas” document or any other queries regarding the Rainforest Decision Support Tool, please contact Tony O’Malley at Terrain NRM: tony.omalley@terrain.org.au

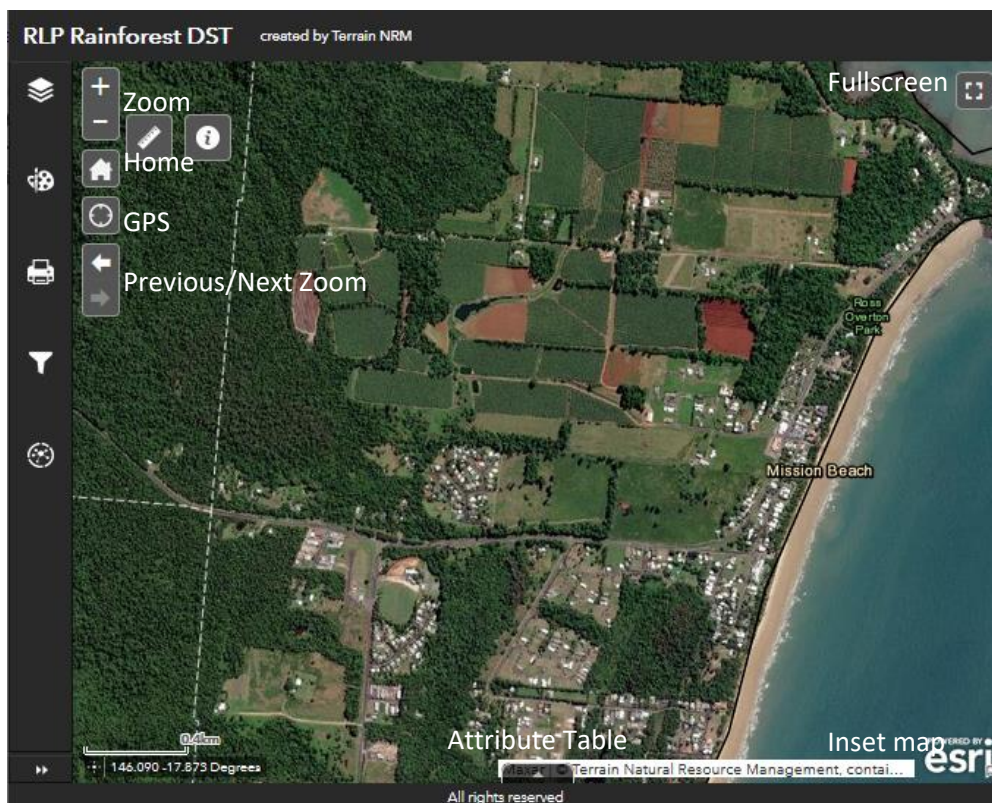
Using the Mapping Tool

Please note that certain browsers can be better at displaying the online maps properly. Mozilla Firefox has been the best lately. If you experience difficulties or browser crashes, please try using Firefox.

Please note that all menus, buttons and options in the mapping tool are accessed using left mouse button clicks.

If you left click anywhere on the map a window will pop up with more information about features in the location that you clicked.

Some of the layers are quite complex or contain many features. Please zoom in before switching layers on and off to improve load times. If a layer is not displaying or is greyed out when it is turned on in the layer list, try zooming in to view those layers. Limiting the number of layers turned on at the same time and layer filters can minimise the number of features that have to be drawn which will make loading faster. Fastest load times will be when the map window is zoomed in and filters are applied to the layers to display the data you are most interested in.



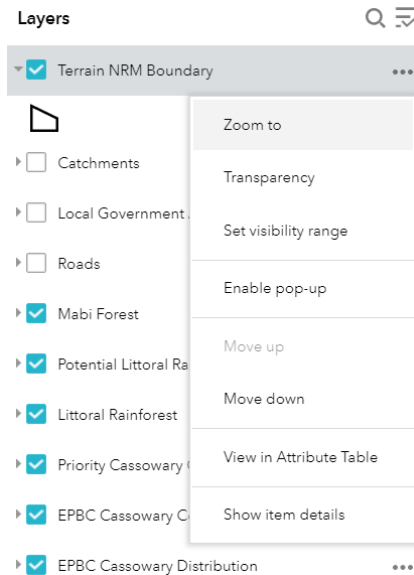
Mapping Tools



Fullscreen - make the map go fullscreen



Layer List - Full control of the map layers including layer order and transparency.



When using layers the little black arrow/triangle on the left show the layer symbology (display colours) and the ellipsis (three dots) on the right gives a layer menu where you can change the transparency and shift layers up or down the list.



Print - Print and download an image or PDF of the map



Draw tool for annotating the map.



Measure tool



Filters – filter layers in the map so that only certain features are displayed. For example filter the geology layer so that only basalt is displayed on the map. Or filter vegetation so that only

high value regrowth is shown. Filters are listed and each has an on/off switch. Ensure the relevant layer is turned on in the layer list to display the filter results on the map.



Analysis. Overlay tool. This enables two of the layers to be overlaid to show their intersection as a new layer. Filter the layers before using this tool to create a specific query. For example, filter the geology to display only basalt and the littoral rainforest layer to display only refugia areas and then intersect them to create a new layer that will include areas of refugial littoral rainforest on basalt geology. **NB Access to this tool is via login only. Access is currently limited to Terrain.** Options are being investigated to give broader access to this tool.


Mapping Layers

Below is a short description of the mapping layers used in this tool.

Please note that there will be some more layers added. Terrain is currently acquiring Local Government Planning Scheme layers.

Layer	Description	Source
Terrain NRM Boundary	The boundary of the Terrain NRM region.	Queensland Government
Grey mask for areas further than 100m from mapped habitat or corridor.	This layer helps to identify a base level of eligibility by applying a grey mask to areas further than 100m from existing habitat or corridor.	Created by Terrain from CSIRO, Queensland Government and Australian Government data
Watercourses	Waterway lines.	Queensland Government
Roads	Road network lines.	Queensland Government
Catchments	Catchment boundaries.	Queensland Government
Traditional Owner Group Areas	See detailed description below this table. Please read before using this layer.	Terrain NRM
Native Title Determinations	Native Title Determination areas.	National Native Title Tribunal
Indigenous Protected Areas	Registered/Gazetted Indigenous Protected Areas	Australian Government
Registered Native Title Bodies Corporate	Registered Native Title Bodies Corporate areas.	National Native Title Tribunal
Register of Native Title Claims	Native Title Claim areas.	National Native Title Tribunal
Indigenous Land Use Agreements	Indigenous Land Use Agreement areas.	National Native Title Tribunal
Local Government Areas	Local Government (Council) boundaries.	Queensland Government

CCRC layers (multiple) NB We hope to have similar layers for all LGAs	Cassowary Coast Regional Council planning scheme environmental zoning and environmental overlay map layers. Sourced 2017. These layers should be interpreted in the context of the Cassowary Coast Regional Council's Planning Scheme http://www.cassowarycoast.qld.gov.au/planning-schemes	Cassowary Coast Regional Council
Mabi Forest	Mabi Forest.	Australian Government
Potential Littoral Rainforest	Littoral Rainforest that meets the description and condition criteria in the Listing Advice.	CSIRO
Littoral Rainforest	Littoral Rainforest as per the REs in the Listing Advice	CSIRO
Priority EPBC Cassowary Corridors	The highest priority corridors identified by the Cassowary Recovery Team. Note that the corridor mapping only includes non-habitat areas within the corridor as existing habitat within corridors is mapped in the EPBC cassowary distribution layer.	Extracted from Australian government EPBC Corridor mapping
EPBC Cassowary Corridors	Cassowary corridors. EPBC cassowary corridors are sourced from Map 2 in EPBC Significant impacts guidelines for cassowary https://www.environment.gov.au/resource/significant-impact-guidelines-endangered-southern-cassowary-casuarius-casuarius-johnsonii Also note that the corridor mapping only includes non-habitat areas within the corridor as existing habitat within corridors is mapped in the EPBC cassowary distribution layer.	Australian Government
EPBC Cassowary Distribution	Cassowary Habitat.	Australian Government
Biodiversity Planning Assessment State Corridors	The corridors of State significance mapped in the Wet Tropics Biodiversity Planning Assessment.	Queensland Government
Mission Beach Cassowaries – Northern Indicative Movement Corridors (Primary)	Mapping commissioned by Mission Beach Cassowaries and conducted by BioTropica in 2020.	Mission Beach Cassowaries
Mission Beach Habitat Network Action Plan – 3 layers	There are 3 layers containing the linkages identified in the Mission Beach Habitat Network Action Plan	Mission Beach Habitat Network Action Plan
Habitat areas of at least 100ha within a single property (excluding National Park)	This maps cassowary habitat where a single property contains at least 100ha of cassowary habitat.	Derived from Queensland Government data
Nature Refuges	Registered Nature Refuge areas.	Queensland Government
World Heritage Area	Wet Tropics World Heritage Area and Great Barrier Reef World Heritage Area	Queensland Government

QLD Government Protected Estate	National Parks, State Forests and other protected estate.	Queensland Government
Revegetation projects. NB Currently limited to certain periods, projects and areas	This layer is a compilation of mapping of revegetation sites on the Southern Atherton Tablelands to 2018 and also Terrain funded projects in 2018. We hope to expand this layer.	School for Field Studies, Terrain NRM
Regulated Vegetation Management Map	Remnant and high value regrowth vegetation and regrowth watercourses.	Queensland Government
Pre-Clear Mabi	Mabi Forest (7.8.3 and 7.3.37) mapped in the Pre-Clear vegetation layer.	Queensland Government
Property Boundaries	Cadastral boundaries.	Queensland Government
Tenure (including covenants)	Cadastral tenure map. Includes a category showing covenants.	Queensland Government
Soils – Wet Tropics Soils Groups	Soils mapping at 1:100,000	Queensland Government
Geology	Surface geology dataset.	Queensland Government
Biodiversity Planning Assessment – Lowland Rainforest Refugia and Upland Climate Refugia areas	Extracted from the Wet Tropics Biodiversity Planning Assessment Landscape (categories wet_l_03 and wet_l_04).	Queensland Government
Climate Refugia for Rainforest Vertebrates  <ul style="list-style-type: none"> ■ Pink high ■ Pale blue low 	This layer is the result of an analysis of habitat of over 200 rainforest vertebrates where higher scores result from higher habitat suitability across the analysed species for both current and projected future climate.	James Cook University
Firescar History	This layer is based on firescar mapping from satellite data compiled by NAFI (https://firenorth.org.au/nafi3/). The layer maps how many times the landscape has burnt in the last 20 years. A history of fire indicates areas that are at risk of burning again in future.	NAFI
Rainforest (fire refugia)	Rainforest broad vegetation group classified at 1:5million scale. Remnant rainforest indicates that an area is unlikely to burn – making it a refugial area from the impacts of fire.	Queensland Government
Fire Hazard (Bushfire Prone Area)	CSIRO conducted a project for the Queensland Government to implement a new method for mapping bushfire risk in Queensland. The driver for this project was to protect life and property through informed landuse planning based on fire hazard mapping. Full report is HERE .	CSIRO
Spectacled Flying Fox Camps	Point layer showing the location of Spectacled Flying Fox Camps that have been active within the last 5 years (current at 2021)	CSIRO
Lowland Tropical Rainforest	This layer has been compiled in consultation with Government but is indicative only. If a formal government layer becomes available, we will replace this layer with the official mapping.	Terrain & Australian & Queensland Governments

Traditional Owner Group Areas

This interactive map layer is designed to provide contact details for relevant Traditional Owner groups across the Wet Tropics NRM region.

- **To view contact details, click on the location of interest on the map, then click on the 'more info' link in the pop up table.**
- **Zoom in to the area of interest to narrow your search area. Selecting an area without zooming in will return a large number of records and will take longer to process.**
- **Where no spatial data is currently available for an area, no pop up table or contact details will be displayed. Updates will be made as new data becomes available.**
- **Where there is more than one contact group for an area, click on the black arrow in the top of the popup table to access contact details for all relevant groups.**



The aim of this map is to improve opportunities for partnerships and collaboration with Traditional Owner groups and individuals in the Wet Tropics NRM region.

Areas shown on the map do not imply any claim or ownership by any particular group over that area. They may indicate a recognised or registered interest by one or more Traditional Owner groups for that area. Where there is more than one group with an interest in that area, contact details are provided for all groups.

A range of publicly available spatial layers have been collated from a variety of sources to prepare this map for the Wet Tropics NRM region.

These layers include:

- Declared Indigenous Protected Areas (IPA)
- Cultural Heritage Bodies (CHB)
- National Native Title Spatial Data –
 - o Indigenous Land Use Agreements (ILUA)
 - o Native title Determinations (NTD)
 - o Register of Native Title Claims (NTDA)

Further explanation on many of these terms can be found by clicking this [link](#).

Descriptions of the National Native Title Spatial Data layers can be found at this [link](#)

Names of groups associated with a particular data layer are shown as they appear in the original data source. The 20 tribal groups which appear as labels on the map have come from the RAPA 2013 Rainforest Aboriginal Peoples' Alliance report.

NOTE: Data layers shown on the map were originally current to 2017. Updates have been made to many of the layers in October 2021 to bring them up to date.