

## Producing a map with the Rainforest Decision Support Tool

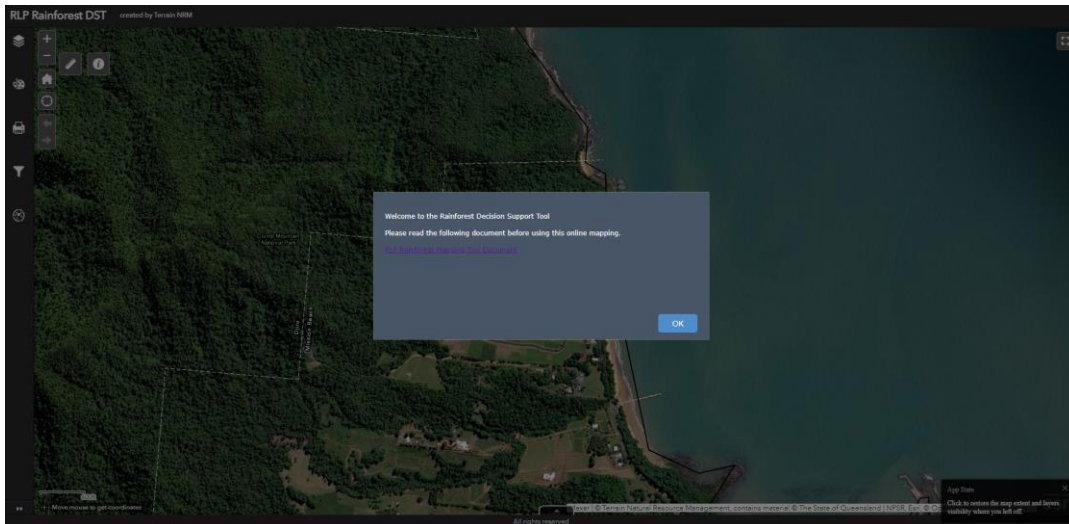
NB You can produce a map for Rainforest grant applications using any method you are comfortable with, but we hope you consider using the Rainforest Decision Support Tool.

### Step 1. Accessing the Rainforest Decision Support Tool (RDST)

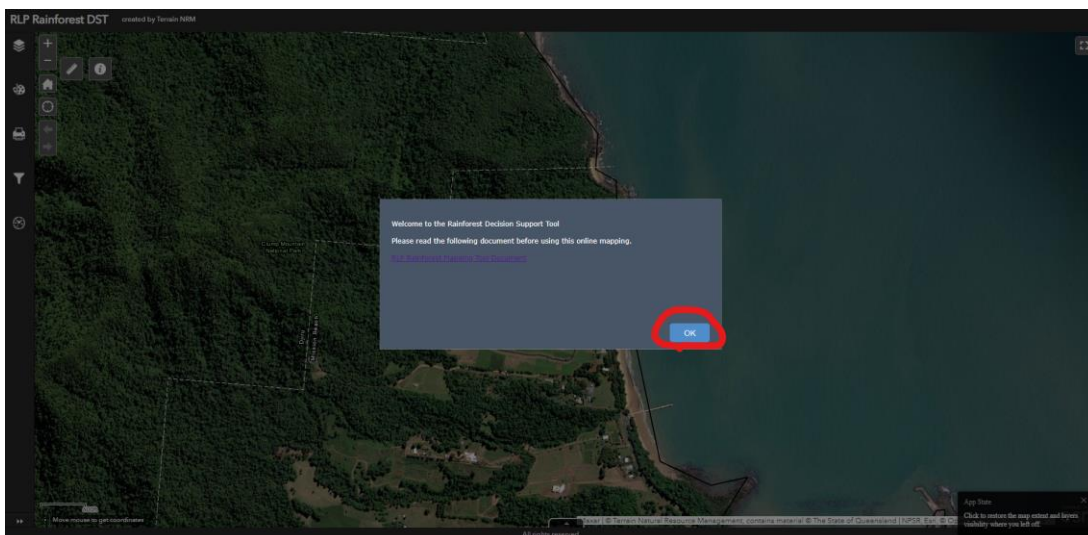
Follow the link or copy and paste the below link into your browser.

<https://terrainrm.maps.arcgis.com/apps/webappviewer/index.html?id=9d8a5a2cdb9140d0b538ef040d48ceb0>

The RDST will open to the page shown below

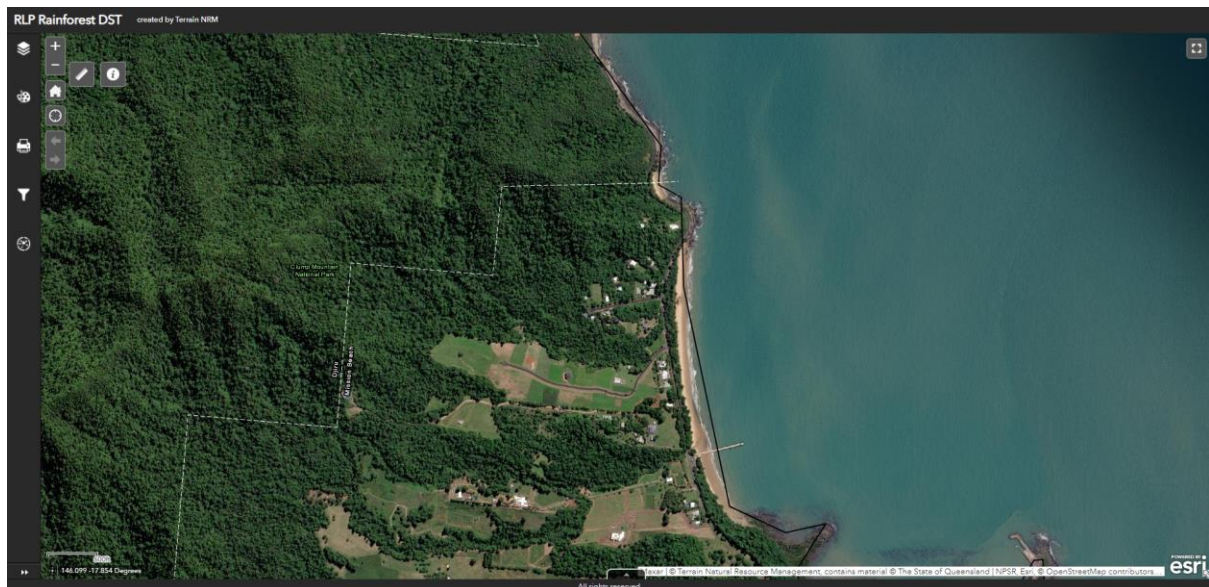



In the grey box left click on the blue OK button

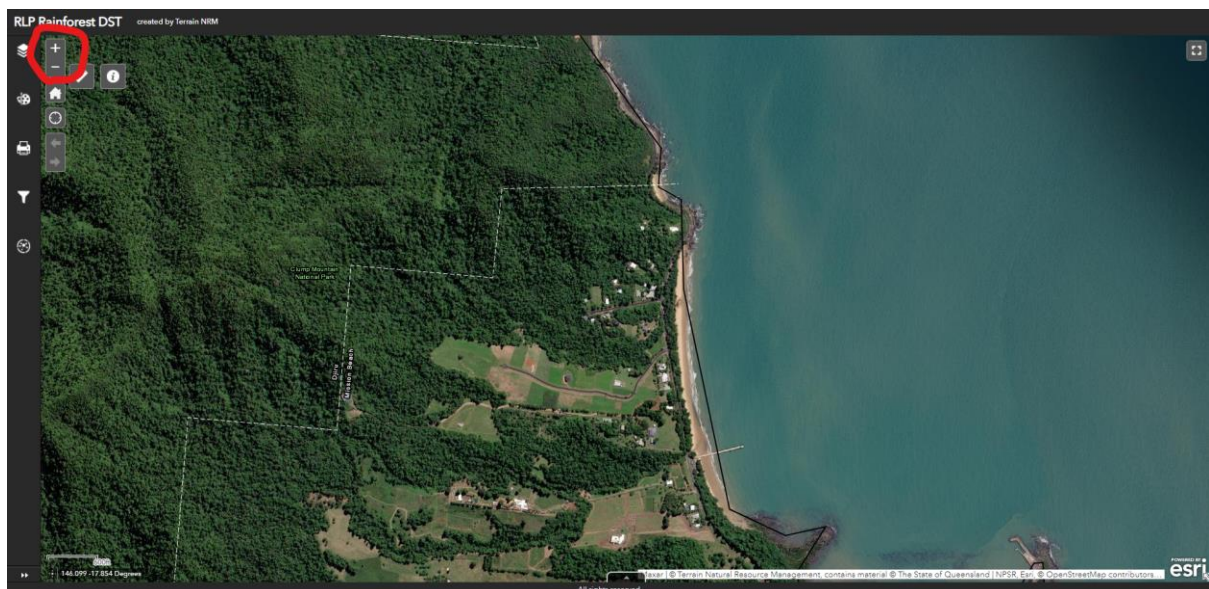


## Step 2. Finding the property/area you are interested in getting funding for


You should now have access to move yourself around the map to find the property/area you are interested in getting funding for.

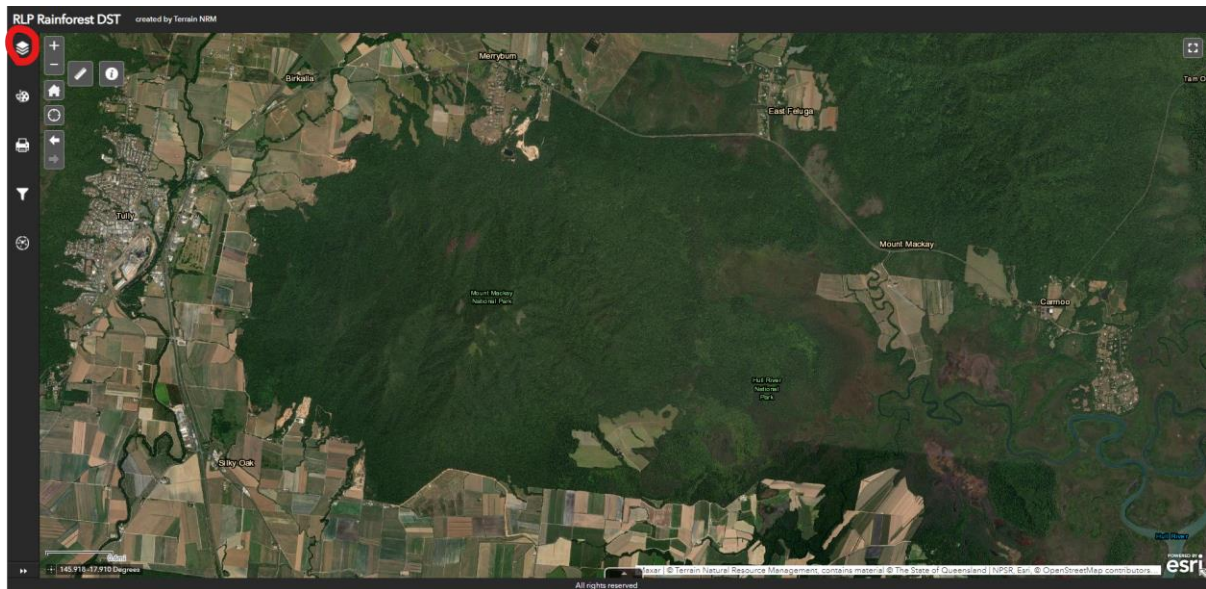


To zoom in or out on the map you can use your scroller on you mouse or the  symbols in the top left corner of the map. Move the map around by clicking and dragging the map in the direction you want to move.

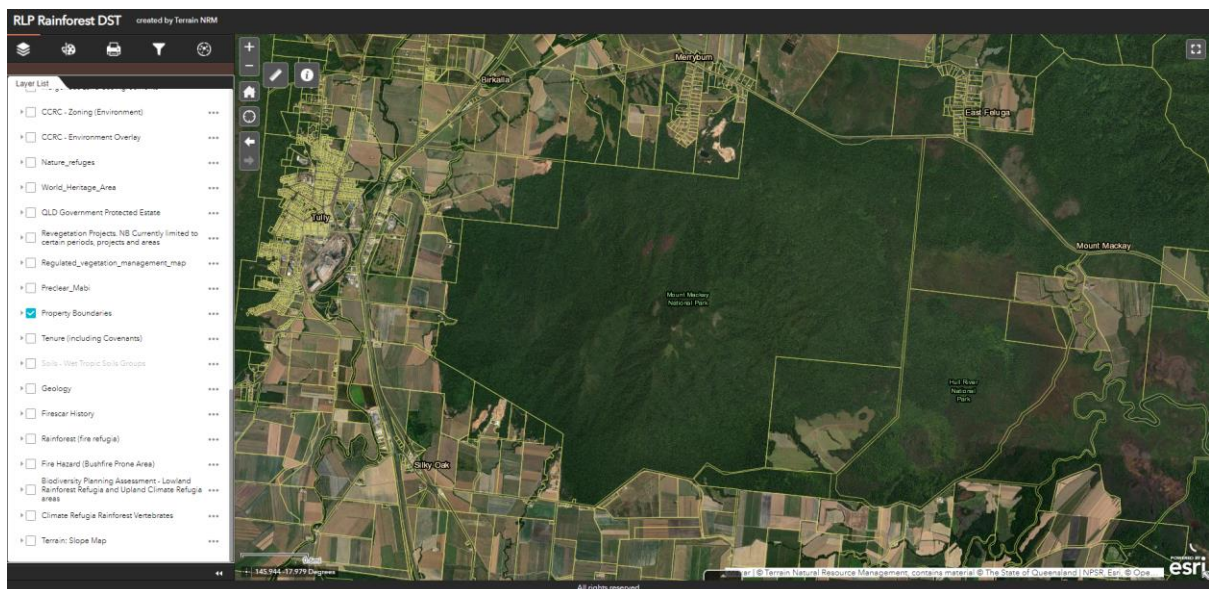


### Step 3. Adding the layers

Once you have found the area you are interested in getting funding for, you can add the relevant layers. The Layer list can be accessed through clicking on the  symbol in the top left corner (shown below)



The layer we would like you to select (by clicking in the box next to the description until it is highlighted blue with a white tick in) and **leave active when you are printing your map** is the 'Property Boundaries' layer. This will show us the boundaries of area you are applying to be working in.




Other layers can be explored by you and may help you design your project. Some key layers are listed below. **Consider turning these layers off before you draw your polygons, so that you can see the aerial imagery underneath.**

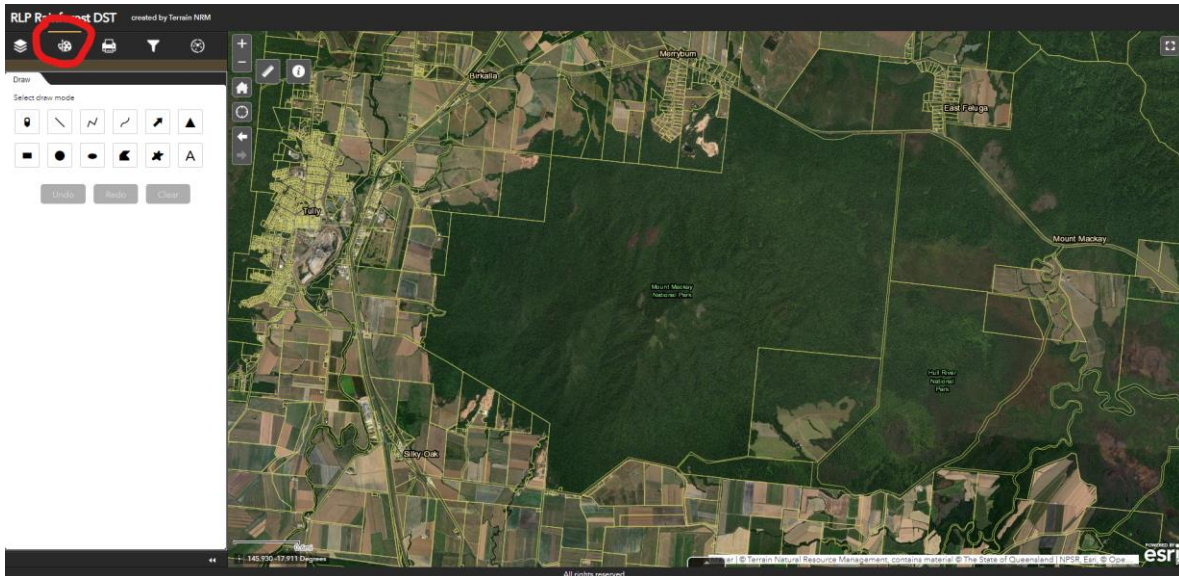
- Mabi, shown as:
  - **\*\*MABI FOREST\*\***
- Littoral, shown as:
  - **\*\*POTENTIAL LITTORAL RAINFOREST\*\***
  - **\*\*LITTORAL RAINFOREST\*\***
- Cassowary, shown as:
  - **\*\*PRIORITY EPBC CASSOWARY CORRIDORS\*\***
  - **\*\*EPBC CASSOWARY CORRIDORS\*\***
  - **\*\*EPBC CASSOWARY DISTRIBUTION\*\***



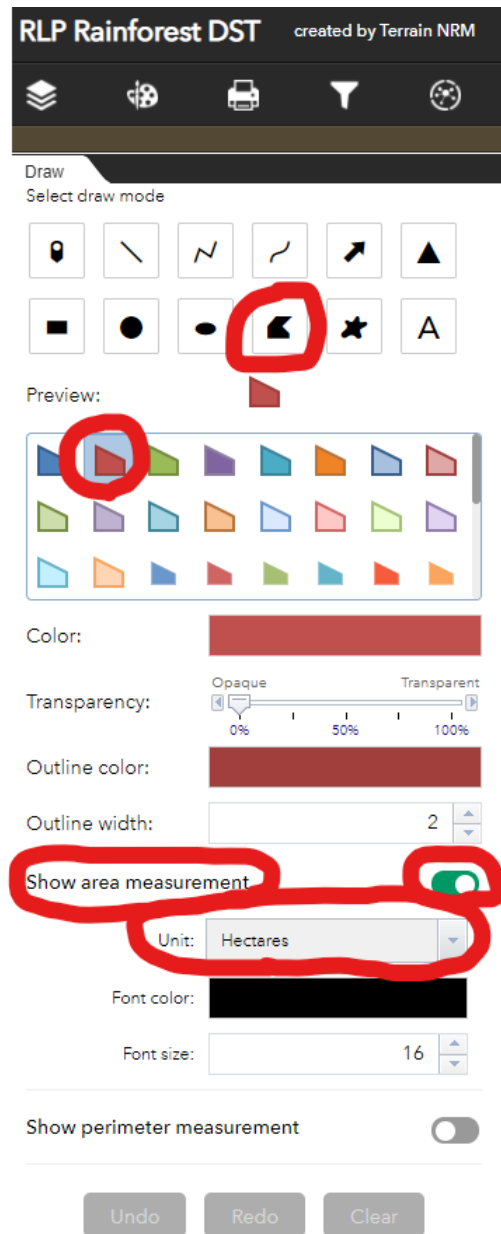
#### Step 4. Drawing polygons to show the area you will be revegetating, weed control and/or habitat protection.

Once you have selected the Property Boundary Layer and any other layer that is relevant to your project design, you can start to draw polygons to show the areas you will be allocating for revegetation, weed control or habitat protection or a combination of these activities.

To begin drawing your polygons, first you must click the Draw symbol  in the top left corner of the screen.



Then select Polygon, select a contrasting colour to the map so it is easily visible. Then click on “Show area measurement” and set it as “hectares”.



Drawing the polygon can now be done by clicking on the screen to place points, a line will appear between these points. If you make a mistake you can use the three options in the bottom left of the screen, Undo, Redo and Clear. You can select different colours to represent different areas of activities. Separate polygons should generally be used for revegetation versus weed management versus habitat protection.



Please make sure to use different colour polygons for different activities and in your application please let us know what each colour means e.g. Red = revegetation & blue = weed control.

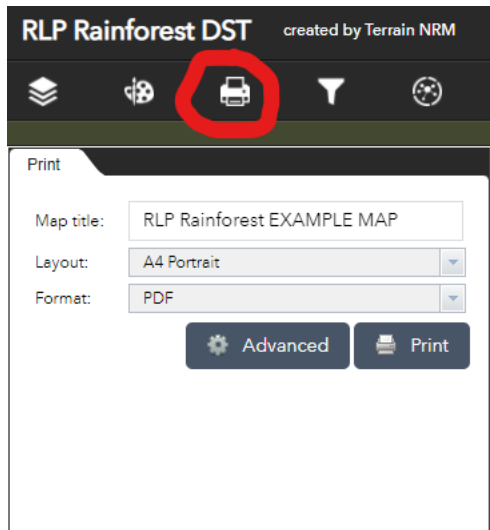
### Step 5. Printing your map for the application

Once you have finished drawing your polygons and you have noted what each polygon represents you are now ready to print the map. Printing the map will actually produce a downloadable PDF of the area on your screen. This PDF can be sent to us without you having to print the map.

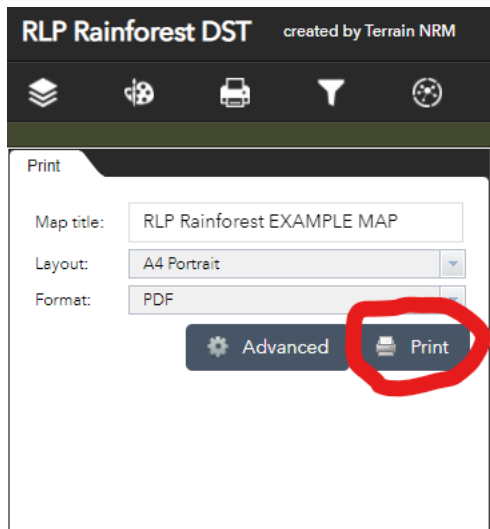
Before you produce this PDF please go back through the layers and make sure that the only layer you have selected is 'Property Boundaries' unless your project application directly relies on information shown by another layer.



To produce the PDF you need to click on the print icon in the top left corner.

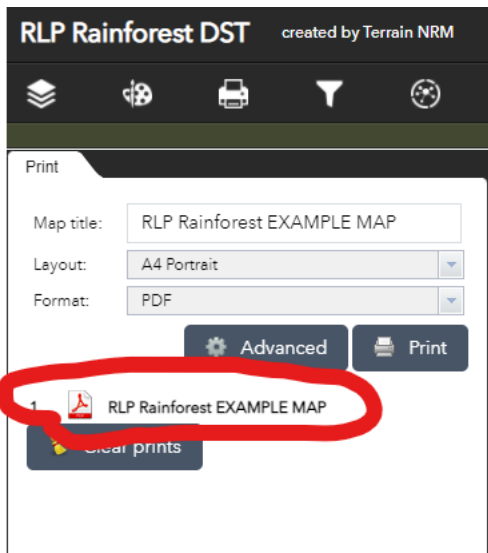


Select the print option

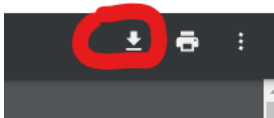


Once your Map has been produced you can click on it to open it.





Once it has opened in your browser please download it and save it somewhere safe.



Your map should resemble the one on the page below. You can then send that map through to us as part of your application



Congratulations on producing a map and navigating the Rainforest Decision Support Tool.

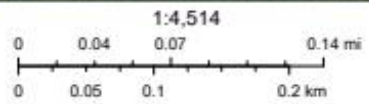
For further instructions please refer to the "General information on the Rainforest Decision Support Tool" document.

# RLP Rainforest EXAMPLE MAP



21/10/2021, 16:17:33

-  Terrain NRM Boundary
-  Property Boundaries



NPSR, Esri, © OpenStreetMap contributors, HERE, Garmin, Maxar