



ANNUAL REPORT

2021-2022

Photograph: Paul Curtis



TERRAIN

NATURAL RESOURCE MANAGEMENT



CHAIR STATEMENT

With the worst of the pandemic behind us, tourists are returning to the Wet Tropics and many new people are calling it home now that we know we can work from anywhere with a decent internet connection. It's no wonder Cairns and Tablelands real estate has boomed.

Historically, economic growth has meant increased environmental pressure, but it's time to do things differently – we must build regional prosperity in a way that values and strengthens the ecological infrastructure underpinning our economy, rather than depleting it further.

The growth of the renewable energy sector is one example. The rollout of the Queensland Northern Renewable Energy Zone is creating community angst as large areas of remnant rainforest are cleared to make way for this new infrastructure. We believe it is possible to build a renewable energy sector in north Queensland that provides quality jobs for our communities and a net zero, nature positive result.

The Australian Government has announced a biodiversity certificate scheme for landholders

undertaking environmental work. This aligns with Terrain's Cassowary Credits initiative. As one of the few organisations in the world developing a biodiversity credit, we have been consulting with the Australian Government to ensure the schemes align and we have also been invited to participate in a Financing for Nature initiative by the World Economic Forum.

Despite this excitement it is disappointing that Terrain is once again addressing challenges due to gaps in government funding cycles. The NRM sector has faced this issue many times, but it doesn't get any easier for staff or project continuity. The board knows we must grow non-government funding to secure our future – the challenge, as a not-for-profit organisation, is developing this with limited available resources.

This year we will have two new directors joining the board. I want to thank outgoing director Peter Rowles for his long-standing service and commitment to strong environmental and community outcomes, and Rhiannon Simcocks for her youthful perspectives and business insights. Rhiannon was Terrain's inaugural Emerging Leader, a program now in its fifth year that continues to contribute so much to the board's thinking.

Thank you also to Alan Colgrave who is stepping down as the industry representative on Terrain's Standing Independent Selection Panel. SISPs selection of directors is a stand-out part of Terrain's governance that has been adopted by many other regional NRM organisations.

Despite current challenges I am confident in Terrain's future role in this fast-changing world. Thank you to Terrain's staff and partners for their commitment and support, and a particular thank you to our members, for the trust you place in the board that serves you.

DR KEITH NOBLE PhD FAICD RPIA MSc BAgSc
Chair, Terrain NRM



CEO STATEMENT

This has been a year of transition – we’ve begun implementing our new strategic plan, and at the same time we’ve been completing some significant long-term projects.

As part of the new strategic plan, we began exploring ways to supplement government funding and attract new and increased investment into our region. Our goal is to rapidly scale up forest restoration and biodiversity projects, which are significantly underfunded despite the Wet Tropics being one of the most biodiverse regions on the planet with the potential to be an important climate refugia. With more than half of the world’s economic output moderately or highly dependent on nature, corporations are starting to understand how nature loss is a key risk, but also an opportunity.

We are looking for corporate and philanthropic partners to invest in our proposed ‘Green Connections’ program, which builds on a successful existing Australian Government funded project to restore and reconnect fragmented habitat areas and increase the resilience of forests. It includes the ‘Cassowary Credits Scheme’, a habitat restoration

credit, which is now progressing to a pilot testing phase. However, this is only one approach for attracting investment and we need to explore others.

Four of the projects that came to an end this year were focused on preventing sediment flowing to the Great Barrier Reef. In 2017 Terrain picked up its first sediment erosion project, the Reef Trust IV Upper Herbert Gully & Grazing Project. This was quickly followed by another three projects funded by the Queensland Government’s Natural Resource Investment Program and Disaster Recovery Arrangements. These projects have enabled us to build significant capability and experience in our sediment reduction team led by Jen Mackenzie. They have made an incredible contribution, installing rock chutes, rock walls, zuni bowls, fencing, planting thousands of trees and delivering ‘grazing naturally workshops’ for landholders. There is still a lot to do to as sediment flowing to the reef is an increasing challenge, but these projects have made an important impact.

One of the highlights this year was the Wet Tropics Major Integrated Project (MIP) being recognised in the Banksia Sustainability Awards. The impact of this project continues through the integration of local scale water quality monitoring in reef water quality programs and the support of Traditional Owners to run their own water quality monitoring projects.

I continue to be inspired by our people who make Terrain such a positive workplace. We even made it on to this year’s ‘top 100 best workplaces in Australia and New Zealand’ list in the Australian Financial Review! I’d like to thank them all for their dedication and passion.

I would also like to acknowledge and thank our many partners and investors and I look forward to continuing our work together to ensure the Wet Tropics continues to thrive sustainably.

STEWART CHRISTIE
Chief Executive Officer



Highlights 2021/22



30 projects

38 HECTARES
REVEGETATED

50,000+ TREES
PLANTED

590+ HECTARES OF

Weed management

2,500+ TONNES
of sediment reduction

TRAINING

66 training events

300 HECTARES
OF FERAL PIG CONTROL



STRATEGIC PLAN 2021-2026

VISION

A thriving and sustainable Wet Tropics

MISSION

Empowering communities to solve our region's environmental challenges, together.

Our new strategic plan has six focus areas underpinned by three themes that cut across all of our work. Climate and Regenerative Economy are new focus areas that will require new funding. A summary document outlining our goals and outcomes over the next five years is available on our website.



Climate

Climate-positive
future



Soil Health

Productive
agricultural systems



Waterway
Health

Healthy and resilient
waterways



Biodiversity

Healthy and resilient
ecosystems



Regenerative
Economy

Living in balance
with nature



Organisational
Excellence

Strong effective
performance

CROSS CUTTING THEMES

Traditional Owner empowerment

New economic opportunities

Community engagement

DAINTREE

PORT DOUGLAS

CAIRNS

ATHERTON

INNISFAIL

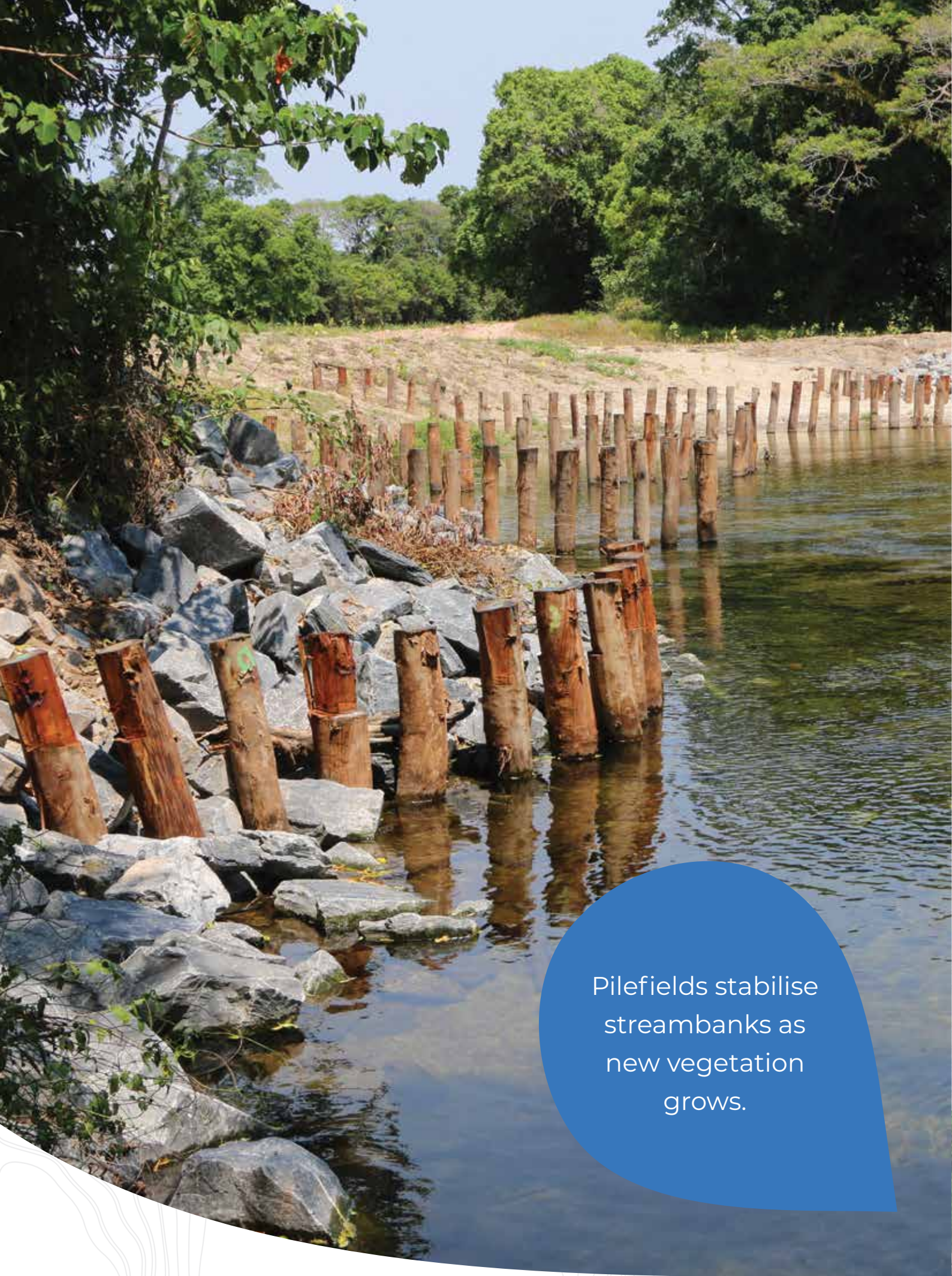
MT GARNET

TULLY

CARDWELL

INGHAM

Terrain
NRM
Region



Pilefields stabilise streambanks as new vegetation grows.

Waterway Health

TACKLING EROSION



The Wet Tropics has nine freshwater basins that flow into the Great Barrier Reef lagoon. Heavy rainfall, short sharp rivers, intensive agriculture and close proximity of the reef to the coast puts the region in the spotlight for nutrient, pesticide and sediment runoff. Terrain has been delivering government-funded reef water quality programs since 2008.

Terrain's first project to reduce sediment flowing to the Great Barrier Reef was the Reef Trust IV Herbert Gully and Grazing Project, which began in 2017 and ended in June 2022 along with NRIP Mossman Integrated Project, NRIP Upper Johnstone Integrated Project and the Disaster Recovery Funding Arrangements (DRFA). Completion of these programs concludes three to five years of work in the Johnstone, Mossman, Daintree and Herbert catchments. These projects achieved outstanding environmental results and community engagement while injecting more than \$13 million into the Wet Tropics region and local communities.

The Great Barrier Reef Foundation's Upper Herbert Sediment Reduction program entered its second year and will run through until May 2024. The first on-ground remediation site was completed, and several landholder agreements were signed relating to grazing management practice change. Landholder extension activities such as one-on-one support, workshops and field group discussions helped support grazing management practice change.

Achievements



16 HECTARES REVEGETATED

3,500 METRES OF STREAMBANK REMEDIATED

22,500 TREES PLANTED

2,500 TONNES OF SEDIMENT SAVED FROM FLOWING OUT TO THE REEF

14 SKILLS-BUILDING workshops/field days





Investment in green jobs also benefits the environment.

Waterway Health

CREEKBANK REVEGETATION

Terrain has continued to partner with Johnstone Landcare to deliver an extended Reef Assist project through 2021/22. Funded by the Queensland Government, this project has been planting trees to revegetate seven sites along riverbanks in the Russell, Johnstone and Murray catchments, which benefits both water quality and biodiversity.

Since October 2020, 8.4 hectares have been revegetated with a total of 40,000 trees. During 2021-22, the project has focused on maintenance of the plantings and propagation of 40,000 rainforest seedlings. Over 30 people have been employed in various capacities through the life cycle of the project, which was initially designed to provide an economic boost during COVID.

FOCUS ON NUTRIENTS

During 2021-22 Terrain had three major water quality projects focused on reducing nutrient runoff from farms:

Projects	1	2	3
	Tully Johnstone Water Quality Project	Reef Trust IV Repeated Tenders	Mobilising the Murray & Mossman
Funder	Great Barrier Reef Foundation and Reef Trust Partnership	Australian Government	Australian Government
Project target	68 tons of DIN reduction	945 tons of DIN reduction	140 tons of DIN reduction
Activities	Nutrient management support, local scale water quality monitoring	Variety of land management practice changes chosen by 38 participating cane growers	Led by sugar industry to address crop constraints, increase productivity and improve water quality
2021-22 highlights	Project in start up phase	Nitrogen reduction of 127 tonnes over 6000 hectares (9.2 tonnes of DIN)	500 farm visits, 37 training events, 7 demonstration sites, 43 farm plans, 12 water quality monitoring surveys





Waterway Health

LOCAL SCALE MONITORING



A new \$3M investment by the Queensland Government has enabled Terrain's water quality team to continue to support projects in the Tully, Johnstone and Murray catchments.

Local scale water quality monitoring provides locally relevant and practical data to enable farmers to make informed land management decisions. It is being delivered through a unique partnership between the Queensland Government, Great Barrier Reef Foundation, Terrain NRM, TropWater, CSIRO and CANEGROWERS.

MAMU ABORIGINAL CORPORATION

This year we began a new water quality monitoring project in partnership with Mamu Aboriginal Corporation. Funded by the Great Barrier Reef Foundation, it is building on existing water quality monitoring in the region, combining cultural knowledge, values and concerns with western science.

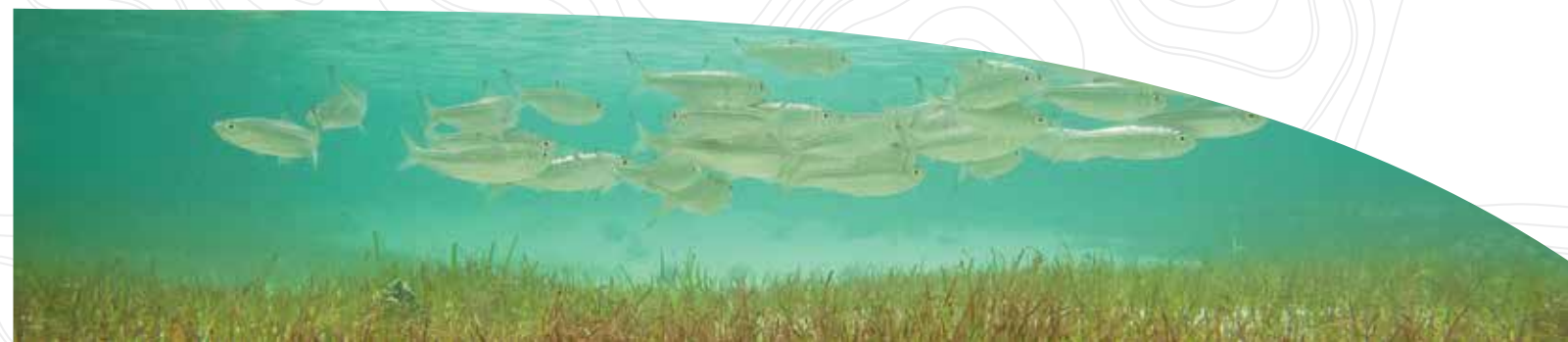
This follows several years of capacity building through the Wet Tropics Major Integrated Project. So far, a Healthy Waterways Strategy for Mamu Country has been developed, a monitoring program has been designed, and on-ground waterway health monitoring is underway employing two casual project officers. The success of this project has helped secure another GBRF grant to expand the waterway health indicators being monitored from October 2022.

TRACKING PROGRESS

Tracking progress towards Australia's Reef 2050 targets is a complex task. Terrain coordinates the Paddock to Reef Integrated Monitoring, Modelling and Reporting Program for the Wet Tropics and also hosts the team responsible for delivering the annual Wet Tropics Waterway Health Report Card.

The Report Card is now in its seventh year. Since launching in 2015, the Report Card has continually been building a more comprehensive picture of waterway health for our region. This year the Report Card includes an assessment of mangrove condition with data being gathered by the Cairns and Far North Environment Centre's Mangrove Watch program and volunteer citizen scientists. An updated assessment of fish barriers across the region is also included.

A key role of both projects is to raise awareness and knowledge of waterway and reef science. Forums, webinars, podcasts and a lifestyle magazine called Reef & Rivers are just some of their achievements.





We're exploring new funding sources to accelerate reforestation in the Wet Tropics.

Biodiversity

RAINFOREST

The IUCN has ranked the Wet Tropics as the second most irreplaceable place in the world. However, whilst the Great Barrier Reef attracts significant investment, biodiversity and forest restoration are under-funded. Our role as a regional NRM organisation is to look to the future by advocating for nature positive development projects and looking for new ways to drive investment into protecting and improving the condition, resilience, and connectivity of our forests.

Terrain's Rainforest Resilience Project is working with landholders, Traditional Owners and community groups from the Daintree to Hinchinbrook to build a network of resilient rainforest corridors. This year we invited the Cassowary, Mabi and Littoral Rainforest Recovery Teams and the top 250 landholders in agreed priority areas to apply for grant funding for revegetation, weed management and habitat protection.

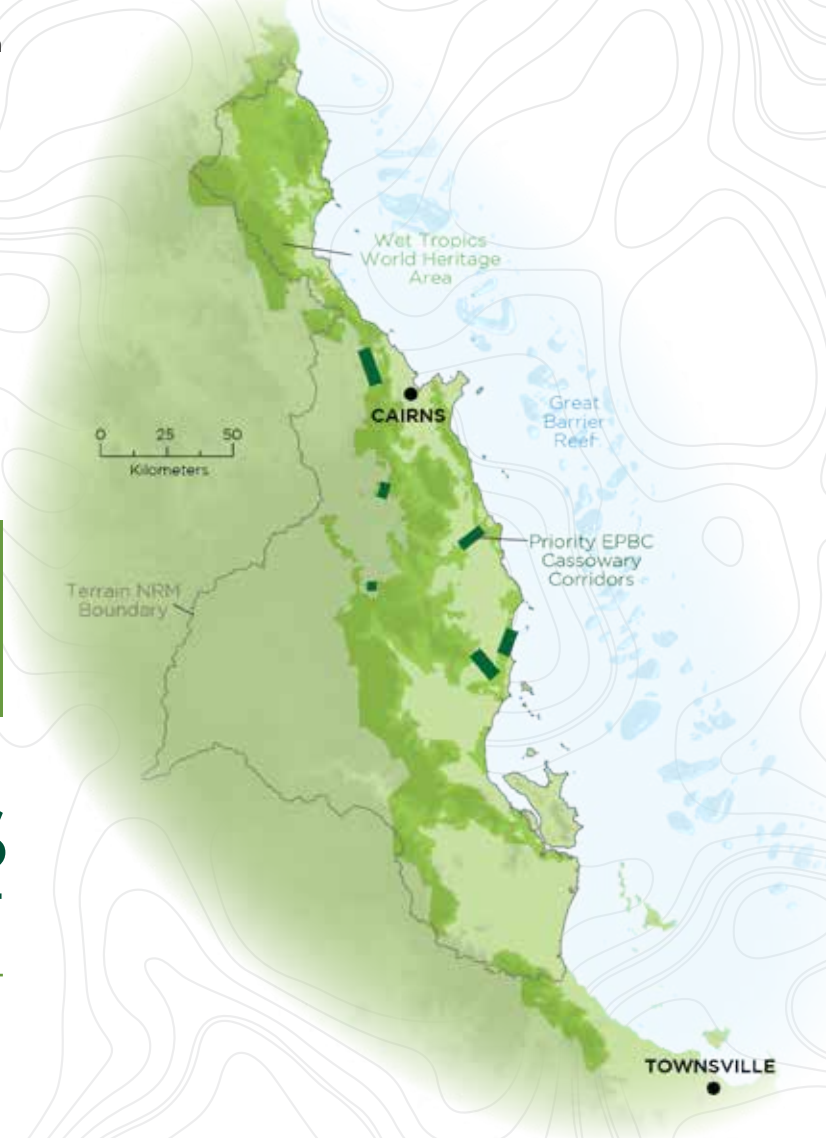
This year 18 projects were funded resulting in:



109 HECTARES OF WEED MANAGEMENT

11 HECTARES OF HABITAT PROTECTION

4.7 HECTARES OF REVEGETATION



This map shows the cassowary corridors in our region that are a priority for revegetation.



Biodiversity

WOODLANDS



The woodland forests in the south of the Wet Tropics region are important habitat for the mahogany glider, one of our priority threatened species.

Since 2014 we have been working closely with a range of partners involved with the Mahogany Glider Recovery Team to protect parcels of land that are critical to the gliders, as well as the endangered ant plant and broadleaf tea tree communities. Our Tackling Woodlands Threats Project includes activities such as fire and weed management, replanting woodlands, and facilitating natural regeneration in strategic areas.

This year we also worked with Dr Stephen Jackson to identify where landscape connections and habitat improvement are needed to facilitate long-term viability of glider populations. JCU is underpinning this work with research to determine the genetic structuring of mahogany glider populations and understand their population dynamics.

This work has resulted in:



50HA PASTURE
converting to regenerated woodland

180 HECTARES OF
Weed management

5.6 HECTARES
OF REVEGETATION

Mahogany Glider
NATIONAL RECOVERY PLAN

WEED CONTROL

Invasive weeds are a major threat to native forest habitats across the region. Several of Terrain's projects include weed management but the following projects funded by the Queensland Government's Natural Resource Investment Program, have specifically targeted weed control in key locations where native vegetation is under threat:

Location	Area	Activities
Mossman	28 hectares	Hiptage removed from infested forests. Ongoing monitoring and weed control will ensure it doesn't re-establish. Large areas of surrounding forest will benefit.
Ravenshoe	10 hectares	Lantana and guinea grass removed from South Cedar Creek along with 1.3 hectares of revegetation. Forest condition is much improved with native species recovering in the understorey.
El Arish	3.5 hectares	Guinea grass and bramble removed along with strategic replanting, which is helping to accelerate natural regeneration after wildfires.
Gilbey Forest	20 hectares	Lantana removed by hand from important yellow bellied glider habitat. This is allowing native understorey plants and new trees to grow.





Biodiversity

NORTHERN QUOLL



Numbers of northern quolls dropped dramatically after the spread of cane toads but small populations that learned to avoid eating them have survived.

We began a new project this year with funding from the Australian Government's Environment Restoration Fund, to trial conservation methods that foster recovery and expand quoll home ranges.

We are working with a range of partners to trial artificial dens as a way to lure quolls back to savannahs and reconnect isolated populations, and we are also undertaking genetic sampling research to determine if the remaining population pockets have become genetically isolated from one another.

NORTHERN BETTONG

There are less than 1000 northern bettongs left and more than 1% were killed by road traffic in 2021. We are working with the Recovery Team to stabilise and recover this critically endangered species.

Road signs have been erected in vehicle strike hotspots to increase driver awareness, a field day was held to demonstrate low intensity burning practices for landholders and a new conservation advice was drafted.

FISH

The Wet Tropics has the highest diversity of fish in Australia with over 80 recorded species. It is estimated that up to 60 per cent of these species need to move between freshwater and estuarine environments for spawning and larval development.

Unfortunately, thousands of fish barriers in the Wet Tropics such as weirs, crossings and culverts block connectivity and threaten fish populations and diversity.

The Fish Homes & Highways project is restoring fish passage by remediating 18 priority fish barriers in the Murray and Lower Herbert catchments, as well as identifying and prioritising more barriers for future remediation work. It is also improving fish habitat through feral pig and weed control, revegetation, bank restabilisation and fire in wetlands.

"FISH PASSAGE WASN'T SOMETHING WE KNEW ABOUT UNTIL TERRAIN APPROACHED US – WE FOUND IT REALLY INTERESTING, AND WANTED TO GET INVOLVED. WE WERE A BIG PART OF THE PLANNING PROCESS, WHICH WAS IMPORTANT TO US BECAUSE AT THE END OF THE DAY THE PROJECT HAS TO WORK FOR BOTH THE FISH, AND THE FARMERS!"

We are also delivering two smaller fish barrier projects, funded by the Australian Government's National Landcare Program. One is identifying and prioritising fish barriers in the Daintree, Mossman and Lower Barron while the second project is working with OzFish, Yirrganydi Land and Sea Rangers and Cairns Airport to remediate mangrove habitat near the airport.

Highlights



150 potential fish barriers
ASSESSED

1 FISH BARRIER
remediated with pipe culverts

8 DESIGNS
for fishways completed
(due for construction in 2022-23)

300 HECTARES OF
FERAL PIG CONTROL

85 HECTARES
of Hymenachne controlled

2 HECTARES
of riparian revegetation in the
LOWER HERBERT
(2200 trees planted & maintained)

154 HECTARES
of pond apple controlled



Building soil knowledge is a win for farmers and the environment.

Soil Health

DIGGING DEEPER PLUS PROGRAM



Since Terrain launched its first Digging Deeper Program in 2014, interest in soil health has gained momentum across the Wet Tropics as farmers have recognised the benefits to their farm businesses as well as to the environment. We have developed a range of resources including a Tropical Soils Handbook and a series of educational videos to meet the growing thirst for knowledge. These are a good starting point for farmers who are interested in improving soil health on their farm.

To date, more than 130 farm businesses have completed our six-month Digging Deeper Plus program. Several past participants have gone on to convene the Wet Tropics SoilCare and Lower Wet Tropics SoilCare groups to enable ongoing networking and peer to peer learning. These groups are supported by our Regional Agricultural Landcare Facilitator who helps organise continued learning opportunities. This is essential for maintaining the momentum for change.

"I THOROUGHLY ENJOYED DIGGING DEEPER. IT'S BEEN REALLY HELPFUL TO LEARN HOW TO READ SOIL TESTS AND NETWORK WITH OTHER FARMERS."

— Grower —

Highlights



9 farm businesses completed the Digging Deeper course (130+ farmers since 2014/15)

100+ FARMERS attended another 6+ soil workshops

PRACTICE CHANGE OVER

800 HECTARES





New economic models are needed to regenerate nature, rather than deplete it.

Regenerative Economies

THRIVING IN BALANCE WITH NATURE



The Wet Tropics economy is heavily dependent on natural resources – tourism, agriculture and fisheries are amongst our largest sectors. There is significant support in the region for economic development to be sustainable and regenerative, and recognition that this provides significant opportunities for the region.

We are working with key partners across the region to support investment in ‘green’ infrastructure and position the Cairns region as a smart green capital.

We supported Advance Cairns to develop the Enhancing Urban Landscapes – Rainforest to Reef regional priority (<https://www.advancecairns.com/advocacy/policy-priorities/enhancing-urban-landscapes/>) and Cairns Regional Council on the regional Smart Green Economy (<https://www.cairns.qld.gov.au/council/projects-and-priorities/major-projects/open-projects/smart-green-economy>)

“REGENERATIVE ECONOMIES MAKE A POSITIVE CONTRIBUTION TO NATURE AND SOCIETY. NOTHING IS WASTED, EVERYTHING IS REUSED, REPURPOSED OR RECYCLED AS IT IS IN NATURE.”

ENVIRONMENTAL MARKETS

Environmental markets have the potential to attract new investment into the environment sector from non-government sources. Although it is still a new developing sector, Terrain has built expertise through the development of the Reef Credit and Cassowary Credit Schemes.

Cassowary Credits is one of the world’s first biodiversity credits. It has been developed to attract large-scale investment in rainforest restoration to build resilience to climate change, and reconnect important wildlife corridors, while also supporting regional communities and First Nations People.

Following an initial feasibility study in 2019 we have drafted a Standard and Restoration Methodology for the Scheme. We have worked closely with

technical experts, landholders, Rainforest Aboriginal Peoples and potential investors. It is now ready for pilot testing to assess the market demand before launching the product.

This year we also undertook a project on behalf of NRMQ to understand the status of environmental markets and the potential opportunities for bringing new investment into the NRM sector and our region.

Organisational Excellence

GOVERNANCE



Terrain NRM is a community-based membership organisation with 82 members including community groups, industry organisations and other NRM related stakeholders who have voting rights at our AGM.

The board of seven skills-based directors is appointed for three-year terms by a Standing Independent Selection Panel (SISP) made up of nominees from our member base. This year Lucy Friend participated in the board through Terrain's Emerging Leader mentoring program. Now in its fourth year, the program is designed to nurture future leaders in the NRM sector by providing an opportunity to learn about governance, board processes and leadership.

TERRAIN'S BOARD DIRECTORS FOR 2021-22



TOP: Chair – Keith Noble, Barry Hunter, Rhiannon Simcocks, Peter Rowles
BOTTOM: Zsuzsa Banhalmi-Bakar, Ryan Donnelly, Pete Faulkner, Lucy Friend (EL)

GOVERNANCE

EXECUTIVE LEADERSHIP TEAM



Stewart Christie
CEO & Regenerative
Economy Leader



Charles Hammond
Waterway Health Leader



Sarah Hoyal
Biodiversity &
Climate Leader



Jorg Edsen
Soil & Strategy,
Comms & Data Leader



Chris Warner
Organisational Excellence &
Corporate Services Leader

UPDATED NRM PLAN

The Wet Tropics Plan for People & Country, our regional NRM plan, encompasses our community's priorities that drive strategic NRM action across the region.

Terrain's projects are all guided by this plan, which is a 'living document' that evolves with changing awareness, priorities and issues. Over the past year we have consulted widely with a range of community stakeholders to review and update the local level priorities. This process enables us to touch base with grass roots community organisations who are making a significant contribution on the ground.

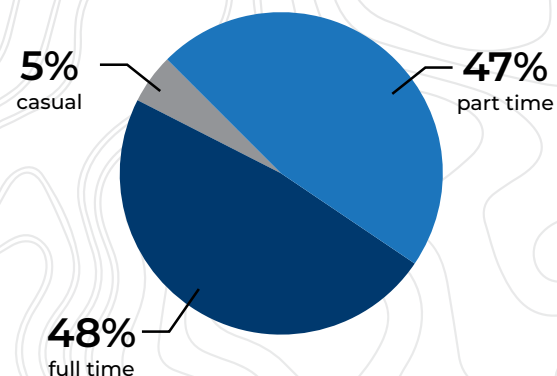


Go to www.wettropicsplan.org.au
to see updated priorities for:

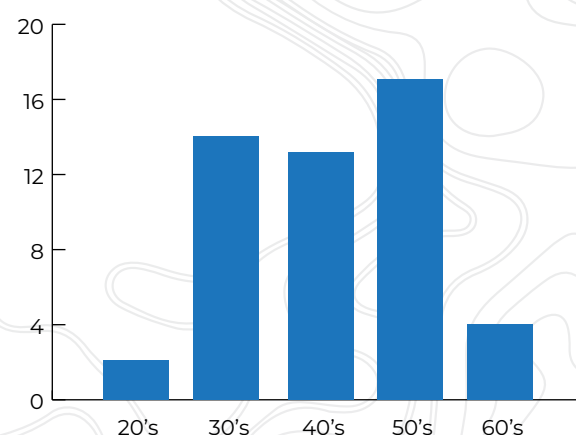
- Water
- Biosecurity
- Climate change
- Sustainable industries
- Biodiversity
- Cultural connections

PEOPLE

Full time vs part time



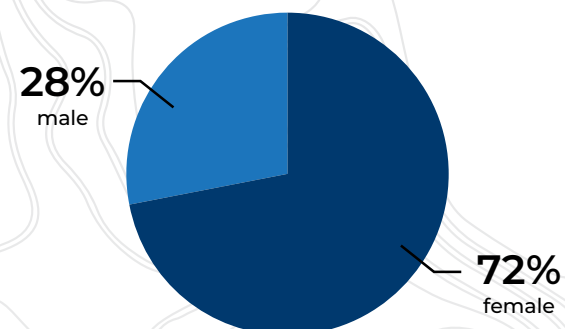
Staff by age



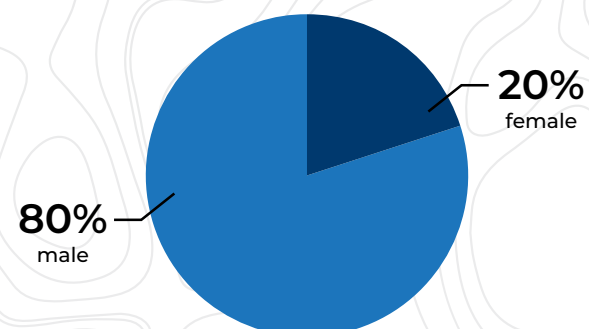
Average age: 46

Indigenous employees: 3

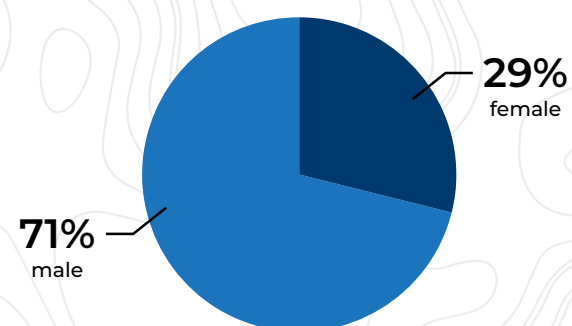
Staff



Leadership



Board



INDIGENOUS BURSARIES

In 2021 Terrain created an Indigenous Bursary program and provided \$3000 bursaries to two recipients who are studying NRM and environment related subjects in tertiary education.

Organisational Excellence

CULTURE



Terrain undertakes a biennial staff survey – the last one was conducted in 2021 and showed an 86% satisfaction rating. In April Terrain was featured on the AFR/Boss Magazine Best Workplaces in Australia and NZ list after a process involving a lengthy staff questionnaire.

Staff are required to complete health and safety workplace training modules each year on topics including bullying and harassment, and mental health. An independent Employee Assistance Program is also provided to staff for counselling and advisory services.

LEARNING & DEVELOPMENT

We have continued to roll out a leadership training program called RELISH, operated by People HQ. 20 staff members completed the program in 2021-22. We have also created informal training sessions including a climate webinar series and monthly 'Lunch & Learn' sessions which both invite speakers to present on expert topics.

CYBER SECURITY

Terrain engages a service manager to help mitigate cybersecurity risks. They are implementing the Essential Eight mitigation strategies from the ACSC's Strategies to Mitigate Cyber Security Incidents, which makes it much harder for outside threats to compromise Terrain's systems.

We have also implemented multi-factor authentication and all staff and directors must complete regular online IT security training modules to minimise the risk of breaches. Patches are applied within 48 hours and in case of worst case scenario, we can recover data on demand should controls fail.



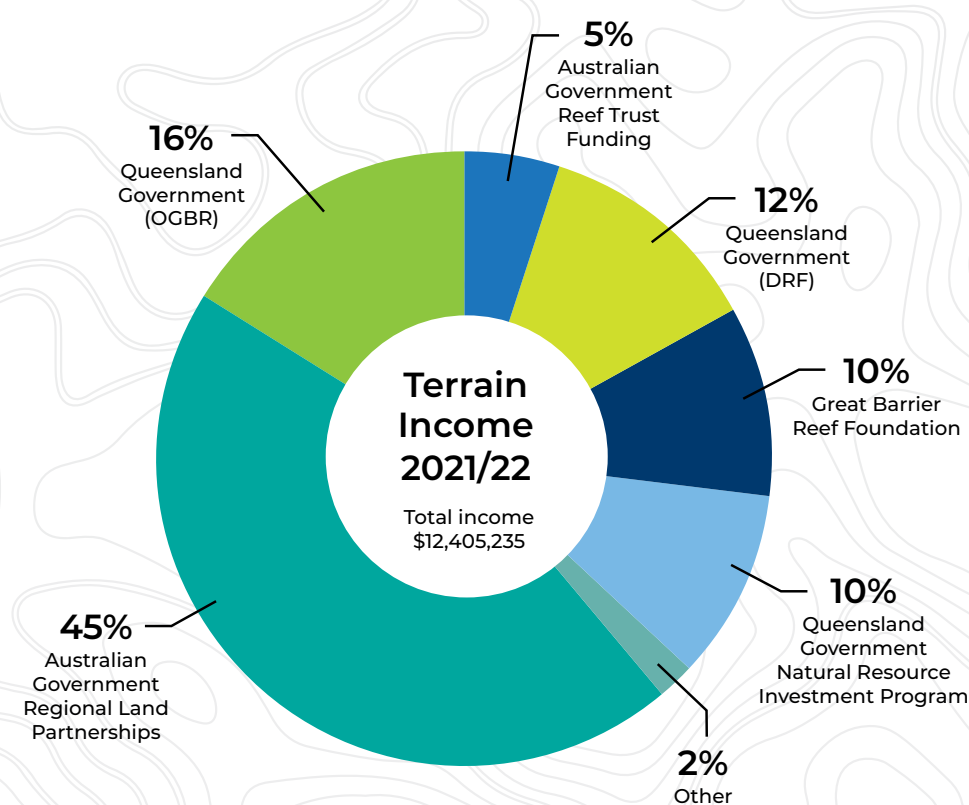
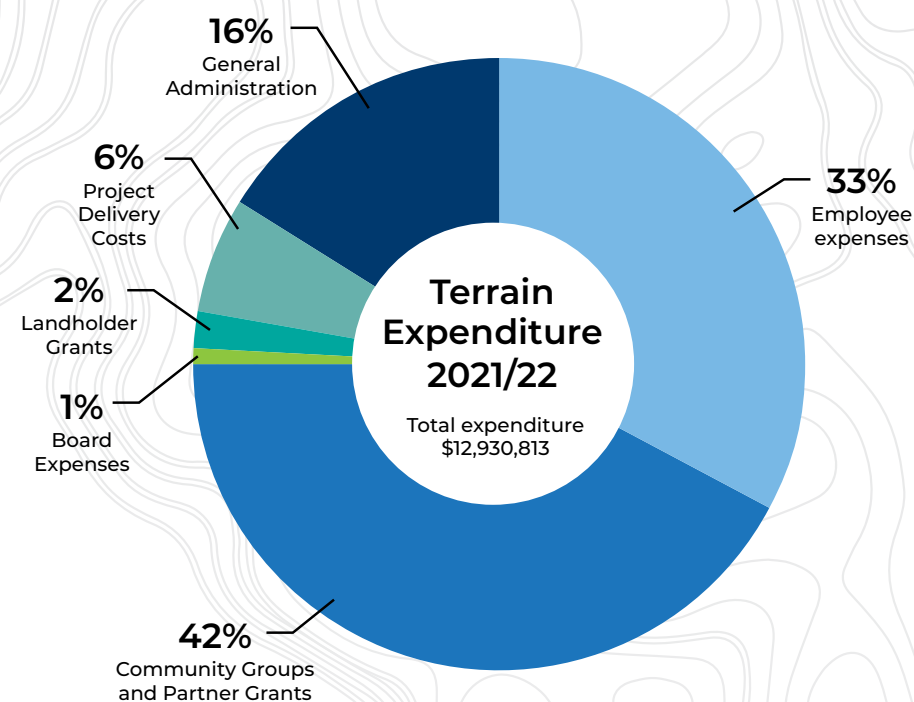
Projects Overview

PROJECTS		Water	Soil	Bio	Climate	Regen
1	Upper Herbert Gully & Grazing Project Australian Government Reef Trust IV Program					
2	GBRF Upper Herbert Sediment Reduction Great Barrier Reef Foundation and Reef Trust Partnership					
3	Disaster Recovery Arrangements: Riparian Recovery Australian and Queensland Governments					
4	Repeated Tenders Australian Government Reef Trust IV Program					
5	Tully Johnstone Water Quality Project Great Barrier Reef Foundation and Reef Trust Partnership					
6	Wet Tropics Waterways – Waterway Health Report Card Various funders including Queensland Government and Australian Government					
7	Regional Land Partnerships: Core Services Australian Government's National Landcare Program					
8	Biodiversity Bright Spots: Building Rainforest Resilience Australian Government's National Landcare Program					
9	Biodiversity Bright Spots: Building Resilience in Wet Tropics Woodlands Australian Government's National Landcare Program					
10	Biodiversity Bright Spots: Northern Bettong Australian Government's National Landcare Program					
11	Healthy Farming Futures: Driving Soil Health Solutions Australian Government's National Landcare Program					
12	Regional Agriculture Landcare Facilitator Australian Government's National Landcare Program					
13	Wet Tropics Plan for People & Country - NRM Plan Review Australian Government's National Landcare Program					
14	Mossman Integrated Catchment Project Queensland Government's Natural Resource Investment Program					
15	Upper Johnstone Integrated Project Queensland Government's Natural Resource Investment Program					

PROJECTS		Water	Soil	Bio	Climate	Regen
16	Native Vegetation Improvement Project Queensland Government's Natural Resource Investment Program					
17	Gilbey Forest Queensland Government's Natural Resource Investment Program					
18	Paddock to Reef Coordination Queensland Government's Natural Resources Investment Program					
19	Regional Coordination and Evaluation Project Queensland Government Natural Resources Investment Program					
20	Mobilising the Murray & Mossman Australian Government's Reef Trust VII Program					
21	Fish Homes & Highways Australian Government's Reef Trust VII Program					
22	RLP Fish Barriers: Connecting Wet Tropics Waterways for Sustainable Recreational Fishing Australian Government's National Landcare Program					
23	RLP Improving Fish Passage in Tropical Mangrove Wetlands Australian Government's National Landcare Program					
24	Cassowary Credits Queensland Government's Land Restoration Fund					
25	Reef Assist: Revegetation of Riparian Zones in Johnstone, Murray and Russell Queensland Government's Reef Water Quality Program					
26	Tully Johnstone Local Scale Water Quality Monitoring Program Queensland Government's Reef Water Quality Program					
27	Northern Quoll: Increase range in area occupied by cane toads Australian Government					
28	Ecosure Nature Refuges Queensland Government Department of Environment & Science					
29	Management of Stevia ovata Queensland Government					
30	Mamu Waterway Health Planning and Management Project Great Barrier Reef Foundation and Reef Trust Partnership					

*Several projects have co-benefits for other strategic focus areas denoted by half boxes.
**Climate and Regenerative Economy are new focus areas not currently directly funded.

Community Financials 2021/22



1

16%
Overhead

2

33
Incoming Investor Contracts

3

183
Outgoing Contracts with Partners

4

29
Grants to Landholders & Community Groups

5

50%
Expenditure to Community Groups, Partners & Landholders





TERRAIN

NATURAL RESOURCE MANAGEMENT

terrain.org.au     